

Colorized 3D point cloud by LuxGear and visualized in LuxWeb

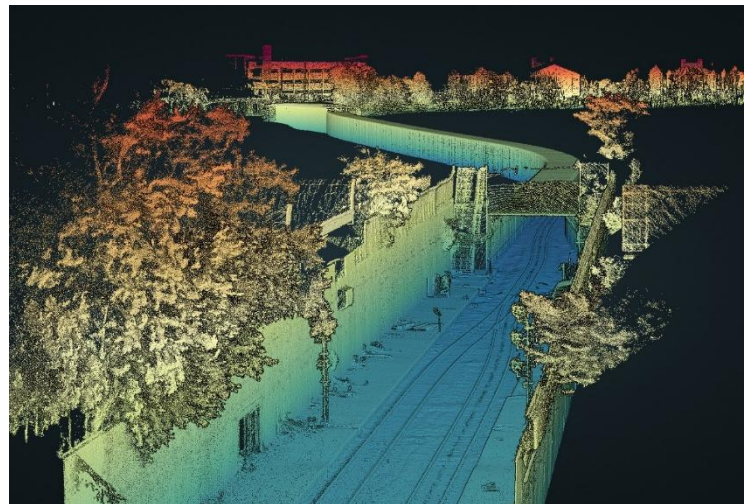
*LuxGear by Lux Modus* has been proven as an efficient and affordable way to capture high-density LiDAR and high-resolution imagery for rail corridors. Our LuxCloud processing engine automatically classifies, and feature extracts the Right of Way assets and overall environment.

Mounted on a geometry car or high-rail vehicle, *LuxGear* provides the accuracy and detail needed for mapping and modeling infrastructure assets for inventory management, engineering, change detection and vegetation management.

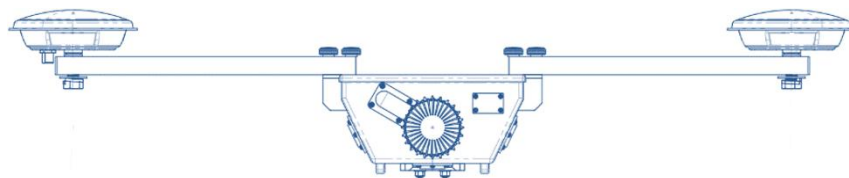
*Ask us about how light and commuter rail owners and operators are changing how they manage their rail assets with our technology.*



High resolution photo captured by LuxGear during LiDAR scan



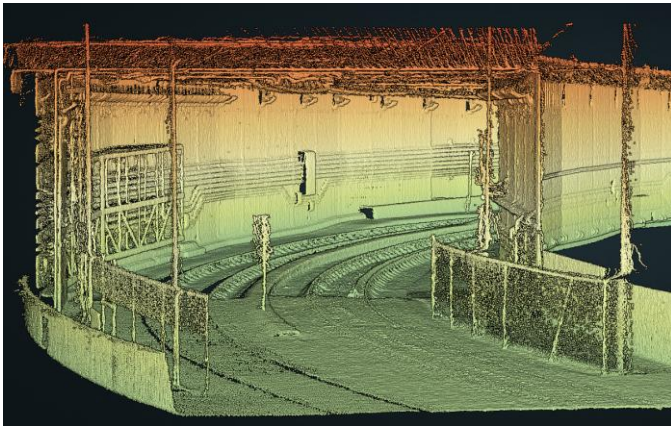
Full feature 3D point cloud by LuxGear and visualized in LuxWeb



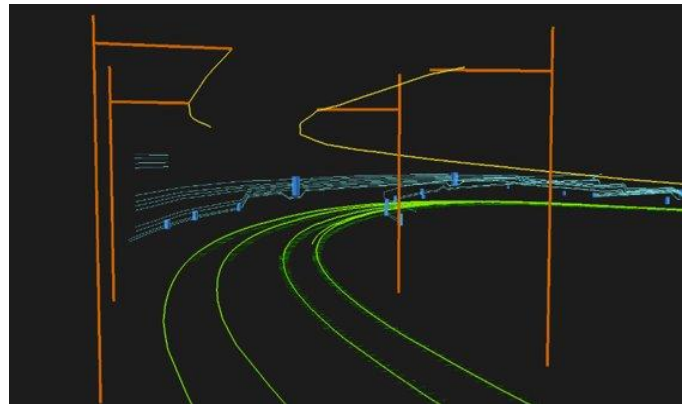
*A 3D Digital Twin is more than point clouds and images. It's GIS and CAD data, ready to be consumed via web maps and desktop or enterprise geospatial systems.*



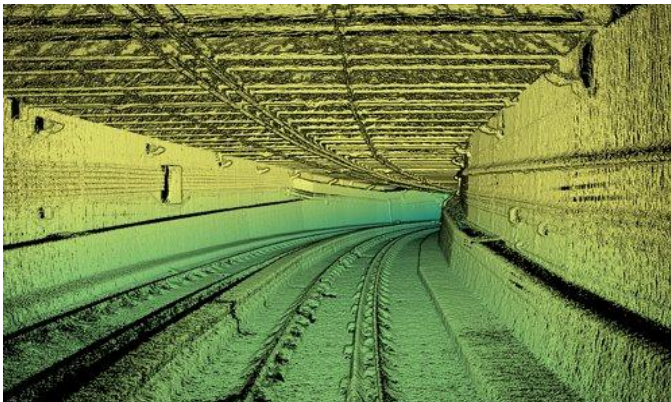
*Create or update your asset inventory with 3D CAD and GIS data extracted from survey-grade, high-density LiDAR and ultra high-resolution imagery.*



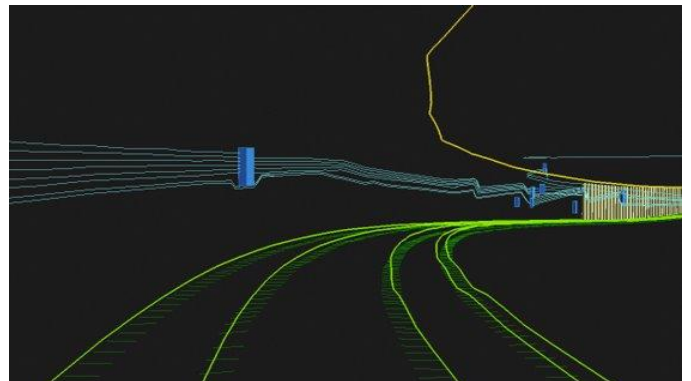
3D LiDAR Scan of Rail Tunnel



3D CAD from LiDAR Scan



3D LiDAR Scan of Rail Tunnel



3D CAD from LiDAR Scan